

NEET PG 2018

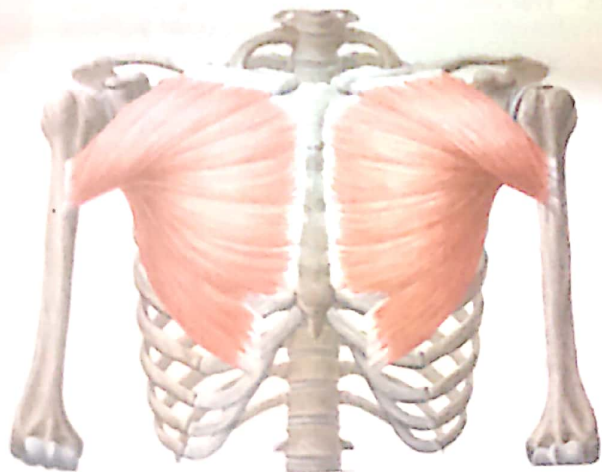
MULTIPLE CHOICE QUESTIONS

ANATOMY

1. Which of the following does not pass through aortic opening of diaphragm?

(NEET PG 2018, AIIMS November 2011)

- a. Aorta
 - b. Phrenic nerve
 - c. Thoracic duct
 - d. Azygous vein
2. Ureteric bud is developed from:
- a. Mullerian duct
 - b. Mesonephric duct
 - c. Paramesonephric duct
 - d. Metanephros
3. Human renal system is functional at what age?
- a. 10-12 weeks of intrauterine life
 - b. 15-17 weeks of intrauterine life
 - c. 20-22 weeks of intrauterine life
 - d. 25-27 weeks of intrauterine life
4. Stimulus for secretion of Mullerian inhibiting substance is present on:
- a. Long arm of chromosome X
 - b. Short arm of chromosome Y
 - c. Long arm of chromosome Y
 - d. Short arm of chromosome 21
5. The muscle in the given image is which type of muscle?



- a. Multipennate
 - b. Unipennate
 - c. Spiral
 - d. Straight
6. Nerves supplying the pharyngeal arches are derived from:
- a. Endoderm
 - b. Mesoderm
 - c. Surface ectoderm
 - d. Neuroectoderm

7. Tensor of vocal cord is:

- a. Posterior cricoarytenoid
- b. Transverse arytenoid
- c. Lateral cricoarytenoid
- d. Cricothyroid

8. True about umbilical cord is:

- a. Has 2 vein and one artery
- b. Umbilical artery takes blood to fetal circulation
- c. Contains special connective tissue called Wharton's jelly
- d. Absence of umbilical vein suggests fetal anomaly

9. Costal cartilage of 8th and 9th ribs articulate with each other by which type of joint?

- a. Fibrous joint
- b. Primary cartilaginous joint
- c. Secondary cartilaginous joint
- d. Synovial joint

10. Which of the following belongs to special visceral efferent nuclei?

- a. Nucleus of tractus solitarius
- b. Nucleus ambiguus
- c. Edinger-Westphal nucleus
- d. Mesencephalic nucleus of trigeminal

11. Broca's area is located in which lobe of brain?

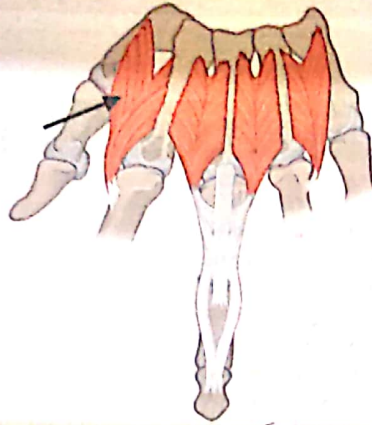
- a. Inferior temporal
- b. Inferior parietal
- c. Inferior frontal
- d. Inferior occipital

12a. Action of the muscle, indicated by arrow, at metacarpophalangeal joints is:



- a. Abduction
- b. Adduction
- c. Flexion
- d. Extension

12b. Action of the muscle, indicated by arrow is:



- a. Abduction
 c. Flexion
 b. Adduction
 d. Extension

13. Lining epithelium of hard palate is:

- a. Keratinized with no salivary glands
 b. Non-keratinized with no salivary glands
 c. Keratinized with minor salivary glands
 d. Non-keratinized with minor salivary glands

14a. Regarding iliolumbar ligament, which of the following is not true?

- a. The stem is attached to transverse process of L4 lumbar vertebra
 b. Lower slip blends with anterior sacroiliac ligament
 c. Upper part is continuous with anterior layer of thoracolumbar fascia
 d. Provides stability and support to posterior sacroiliac joint

14b. Function of iliolumbar ligament is:

- a. Increasing flexion
 b. Limiting side bending
 c. Limiting extension
 d. Increasing rotation

15a. Which of the following is not derived from dorsal pancreatic bud?

- a. Head of pancreas
 b. Tail of pancreas
 c. Body of pancreas
 d. Uncinate process of pancreas

15b. Which of the following is not derived from the gut, up to the level of dorsal mesenteric bud?

- a. Liver
 b. Pancreas
 c. Small intestine
 d. Stomach

15c. Which of the following is not a derivative of primitive dorsal mesentery?

- a. Linorenal ligament
 b. Gastrosplenic ligament
 c. Hepatoduodenal ligament
 d. Greater omentum

16. Ligaments holding the uterus in anteversion are:

- a. Round ligament and transverse cervical ligament
 b. Round ligament and uterosacral ligament
 c. Uterosacral ligament and transverse cervical ligament
 d. Uterosacral ligament and broad ligament

17. Last fontanelle to fuse in a child is:

- a. Anterior
 c. Posterolateral
 b. Posterior
 d. Anterolateral

18. True about Sibson's fascia/suprapleural membrane are all except:

- a. Subclavian vessels arches over it
 b. Attached to transverse process of C7
 c. Develops from scalenus anterior
 d. Attached to inner border of 1st rib

19. Newly erupted tooth is covered by:

- a. Perikymata
 b. Nasmyth's membrane
 c. Fibrous tissue
 d. Mucopolysaccharide

PHYSIOLOGY

20. Estimation of total body fat can be done by measuring:

- a. Waist-hip ratio
 b. Total body water
 c. Body mass index
 d. Total body calcium

21. Ebb phase and flow phase are seen in:

- a. Normal cardiac cycle
 b. Normal respiratory cycle
 c. Stress response
 d. Muscle contraction cycle during exercise

22a. True about infinite ventilation perfusion ratio:

- a. Partial pressure of oxygen in alveoli is same as in blood
 b. Partial pressure of oxygen in alveoli is same as in atmosphere
 c. There is absolute shunt
 d. There is relative dead space

22b. True about infinite ventilation perfusion ratio:

- a. Partial pressure of O_2 in alveoli is zero
 b. Partial pressure of CO_2 in alveoli is zero
 c. No exchange of O_2 and CO_2
 d. All are true

23. Nitric oxide produces its action via:

- a. c-AMP
 b. c-GMP
 c. IP-3 DAG
 d. Transcription factor

24a. Endothelin produced by endothelium is a:

- a. Powerful vasoconstrictor
 b. Powerful vasodilator
 c. Bronchodilator
 d. Cardiac depressant

- 24b. Endothelin acts through:
- Tyrosine kinase pathway
 - cAMP
 - cGMP
 - IP_3 -DAG system
25. Aldosterone secretion is stimulated by:
- Low potassium
 - High sodium
 - Angiotensin II
 - FSH
26. C-wave in jugular venous pressure (JVP) corresponds with:
- Atrial contraction
 - Atrial relaxation
 - Isovolumetric ventricular relaxation
 - Isovolumetric ventricular contraction
- 27a. Countercurrent multiplier system occurs in:
- Proximal convoluted tubule
 - Distal convoluted tubule
 - Loop of Henle
 - Collecting duct
- 27b. Components responsible for counter current mechanism in kidney are all *except*:
- Sodium outflow in thick ascending limb
 - Water outflow in thin ascending limb
 - Sodium outflow in thin ascending limb
 - Flow of tubular fluid from PCT to DCT
28. Iron absorption in intestine occurs via:
- (AIIMS November 2019, NEET PG 2018)
- Intrinsic factor
 - DMT-1
 - DMT-2
 - Hemopexin
29. Glucose absorption in intestine occurs by which mechanism? (AIIMS November 2018, NEET PG 2018)
- Secondary active transport
 - Facilitated diffusion
 - Simple diffusion
 - Primary active transport
30. Insulin-like growth factor is secreted by which of the following organ?
- Liver
 - Kidney
 - Pancreas
 - Brain
31. Prosopagnosia is defined as:
- Inability to read
 - Inability to identify the faces
 - Inability to write
 - Inability to speak
- 32a. Macromolecule transport across the nucleus occurs through:
- Porins
 - Karyopherins
 - Perforins
 - G-protein

- 32b. Export of ions from nucleus to extracellular matrix involve all *except*:
- Karyopherins
 - Local signals
 - Importins
 - Ran proteins
33. Alpha waves are seen during:
- Sleep
 - REM movements
 - Relaxed state
 - Active state

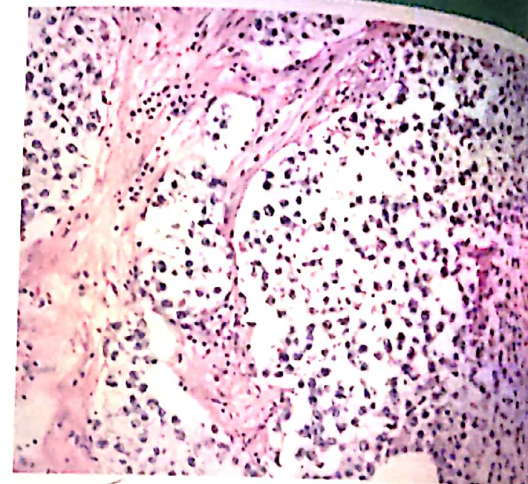
BIOCHEMISTRY

34. Which of the following flipped pattern of LDH is seen in myocardial infarction?
- LDH1 > LDH2
 - LDH2 > LDH1
 - LDH2 > LDH4
 - LDH5 > LDH1
35. Negative charge in fibrin fibrinopeptide-A and fibrinopeptide-B is due to which amino acid?
- Arginine
 - Lysine
 - Aspartic acid and glutamic acid
 - Leucine
- 36a. Active metabolite form in the synthesis of fatty acid is:
- Malonyl-CoA
 - Palmitate
 - Stearate
 - Acetyl-CoA
- 36b. Major product of de-novo synthesis of fatty acid is:
- Palmitate
 - Stearate
 - Oleate
 - Elaidic acid
37. Fish-odor syndrome is treated by:
- Palmitate
 - Stearate
 - Niacin
 - Riboflavin
- 38a. All of the following are the functions of DNA polymerase-I *except*:
- Proof reading
 - Filling the gap between Okazaki fragments
 - 5' → 3' exonuclease activity
 - Polymerization of Okazaki fragments
- 38b. True about DNA polymerase-III:
- Required for translation
 - Has DNA repair function
 - Forms Okazaki fragments and needs RNA primer
 - Has no proof-reading activity
39. Enzyme deficient in tyrosinemia type-I:
- Tyrosinase
 - Homogentisate
 - Fumarylacetoacetate hydroxylase
 - Hydroxy phenyl pyruvate hydroxylase

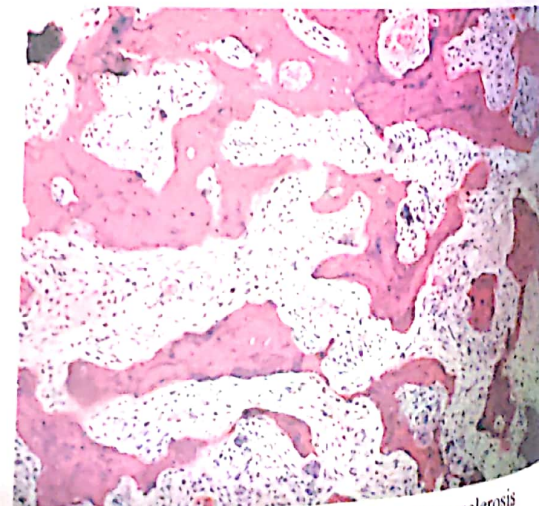
- 40a. Which of the following is a feature of phenylketonuria?
 a. Loss of deep tendon reflexes
 b. Mental retardation
 c. Macrocephaly
 d. All of the above
- 40b. True statement regarding phenylketonuria are all *except*:
 a. Due to deficiency of phenylalanine hydroxylase
 b. Neurological symptoms are due to excess phenylalanine
 c. Blood phenylalanine level > 20 mg/dL causes severe disease
 d. Method of choice for screening is urinary phenylalanine by Guthrie test
41. Lesch-Nyhan syndrome is due to deficiency of:
(NEET PG 2018, AIIMS November 2016)
 a. HGPRT
 b. Dihydro-orotase
 c. PRPP synthase
 d. PRPP amidotransferase
42. In cystinuria none of the following amino-acid is reabsorbed *except*:
 a. Lysine
 b. Arginine
 c. Citrulline
 d. Ornithine
43. Enzyme deficient in galactosemia:
 a. Aldolase-B
 b. Fructokinase
 c. B-galactosidase
 d. Galactose-1-phosphate uridyl transferase
44. Chemically serotonin is:
 a. 5-hydroxytryptophan
 b. 5-hydroxytryptamine
 c. Acetyl-5-methyl tryptamine
 d. Acetyl tryptamine
45. Major action of chaperones is:
 a. Folding of introns
 b. Folding of RNA
 c. Folding of DNA
 d. Folding of proteins
46. Most abundant pro-form of vitamin A is:
 a. Alpha-carotene
 b. Beta-carotene
 c. Retinaldehyde
 d. Retinol
47. True about vitamin K is:
 a. Water soluble vitamin
 b. Helps in synthesis of factor VIII
 c. Prolonged antibiotic therapy for bacterial infection can cause vitamin K deficiency
 d. Vitamin K deficiency leads to thrombosis

PATHOLOGY

48. A testicular tumor was extracted in a 40 years old patient, who presented with scrotal swelling. The following images are showing gross and histological picture of specimen. What is the diagnosis?

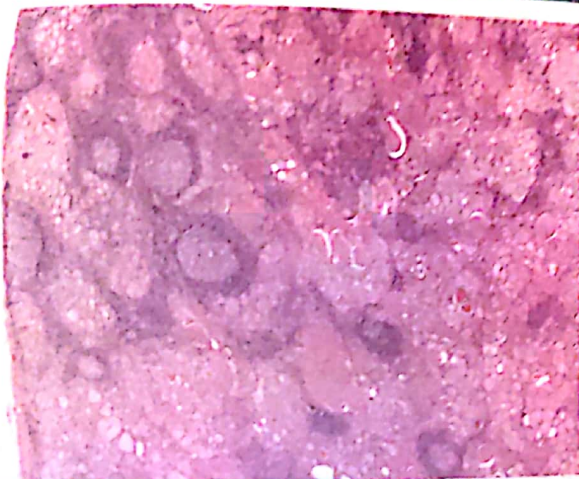


- a. Seminoma
 b. Yolk sac tumor
 c. Embryonal carcinoma
 d. Hamartoma
49. Biopsy of a long bone was taken and the histology is shown below. Which of the following is the likely diagnosis?



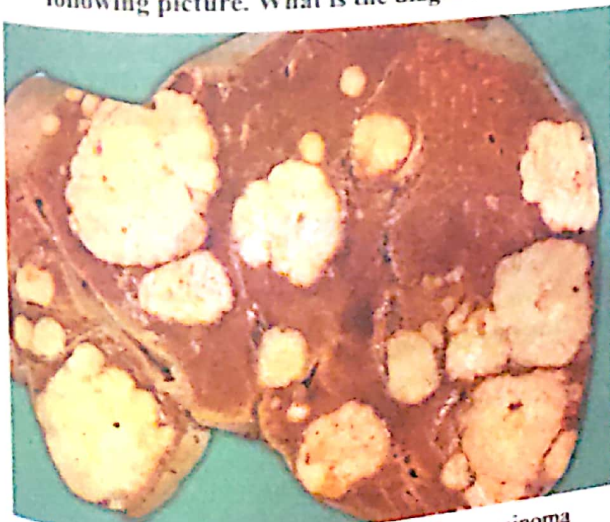
- a. Osteoporosis
 b. Osteosclerosis
 c. Osteomalacia
 d. Paget's disease
50. PAS (+)ve macrophages in the lamina propria of the intestinal wall is a characteristic pathological feature of:
 a. Tropical sprue
 b. Whipple's disease
 c. Crohn's disease
 d. Celiac disease

51. A 40-year-old female presented with neck swelling. Following are gross and microscopic pictures of the specimen obtained from the thyroid swelling. What is the diagnosis?



- a. Hashimoto's thyroiditis
- b. Grave's disease
- c. Multinodular goiter
- d. Follicular carcinoma

52. A 69-year-old male died from massive thromboembolism. The gross specimen of liver is showing the following picture. What is the diagnosis?



- a. Metastatic carcinoma
- b. Adenocarcinoma
- c. Angiosarcoma
- d. Hemangioma

53. Stellate granuloma with debris and neutrophils is caused by:
 a. *Sarcoidosis*
 b. *Tuberculosis*
 c. *Leptospira*
 d. *Cat-scratch disease*

54. Gross specimen of lung from a patient is showing following figure. What is the most probable diagnosis?



- a. Pneumoconiosis
- b. Miliary tuberculosis
- c. Bronchiectasis
- d. Pneumonia

55a. Most prominent cells in rheumatoid arthritis:

- a. Macrophages
- b. Neutrophils
- c. Lymphocytes
- d. Monocytes

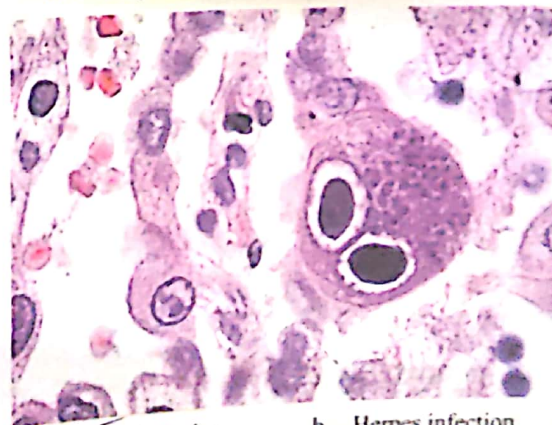
55b. Which of the following is the most important infiltrate in rheumatoid arthritis?

- a. Dendritic cells
- b. Macrophages
- c. Neutrophils
- d. CD4+ helper T cells

56. Which of the following metals aggravates rheumatoid arthritis?

- a. Lead
- b. Beryllium
- c. Cadmium
- d. Iron

57. A 42-year-old patient has immunodeficiency and complaints of dysphagia. His upper GI endoscopy reveals multiple ulcers in the distal esophagus. The biopsy picture is shown for the patient as under. What is the most likely diagnosis?



- a. CMV infection
 - b. Herpes infection
 - c. Candida
 - d. Drug-induced esophagitis
58. Which virus is most likely to be transmitted by organ transplantation?
- a. EBV
 - b. CMV
 - c. HSV-1
 - d. VZV

- 59a. Von-Willebrand disease causes:
- Increased bleeding time
 - Increased PT
 - Increased fibrinogen
 - Increased fibrinogen degradation products
- 59b. Which of the following is not true regarding von-Willebrand disease?
- Normal platelet count
 - Quantitative defects are seen in subtypes 1 and 3 von Willebrand disease
 - Hemarthrosis is the usual presentation
 - vWF is produced by endothelial cells
- 60a. CD-59 deficiency is seen in:
- Paroxysmal nocturnal hemoglobinuria
 - Thrombotic thrombocytopenia purpura
 - Hemolytic uremic syndrome
 - Paroxysmal cold hemoglobinuria
- 60b. Which of the following is the best test for the diagnosis of paroxysmal nocturnal hemoglobinuria?
- Sucrose lysis test
 - Ham test
 - Flow cytometry
 - Bone marrow aspiration
- 61a. Anaplasia is related to:
- Level of differentiation
 - Ability to transform into different cells
 - Multiple ribosomes
 - Hypodense nucleus
- 61b. Absence of differentiation is known as:
- Metaplasia
 - Anaplasia
 - Dysplasia
 - Any of the above
- 62a. Inheritance of ataxia-telangiectasia is:
- Autosomal recessive
 - Autosomal dominant
 - X-linked recessive
 - X-linked dominant
- 62b. Which of the following is not false about ataxia telangiectasia?
- It is associated with normal immune function
 - Serum levels of IgM are increased
 - It is X-linked recessive disease
 - There is presence of amphicytes in different organs
63. Inheritance of color-blindness is:
- AD
 - AR
 - X-linked dominant
 - X-linked recessive
- 64a. The genetic defect in myotonic dystrophy is located on:
- Chromosome 19
 - Chromosome 20
 - Chromosome 17
 - Chromosome 11
- 64b. Gene involved in Duchenne muscular dystrophy:
- DMPK
 - Dystrophin
 - Nm receptor
 - Kinesin
- 65a. Among the prostaglandins which is a pyrogen?
- PGF2
 - PGE1
 - PGE2
 - PGT2
- 65b. Which of the following has pyrogenic activity?
- TGF-beta
 - IL-6
 - IL-5
 - IL-2

66. Lymphohistiocytic variant of Reed-Sternberg cell is seen in which type of Hodgkin's disease?
- Nodular sclerosis
 - Mixed cellularity
 - Lymphocytic predominance
 - Lymphocytic depletion
67. Neuroendocrine tumor is having which of the following as an immunohistochemical marker?
- Cytokeratin
 - Calretin
 - Synaptophysin
 - Carcinoembryonic antigen

PHARMACOLOGY

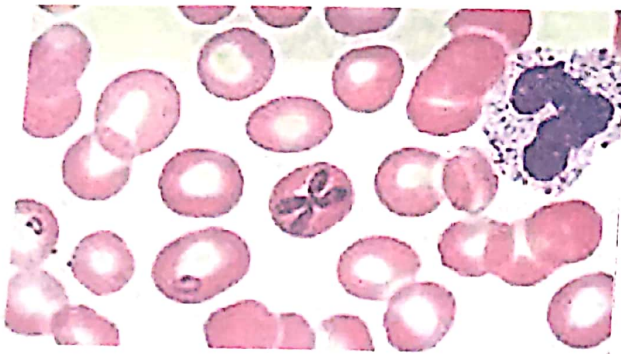
68. Anticholinergic drug pirenzepine is used for which of the following?
- Glaucoma
 - Vomiting
 - Diarrhea
 - Gastric ulcer
69. Aliskrein acts by:
- Blocking angiotensin receptors
 - Inhibition of renin
 - ACE inhibition
 - Blocking α -1A receptors
70. Which of the following drug causes QT interval prolongation?
- Ampicillin
 - ACE inhibitors
 - Quinidine
 - Metronidazole
71. Which of the following is true about tigecycline?
- No first pass metabolite
 - Used in UTI
 - Binds to 50S ribosomal subunit
 - More than 90% Pseudomonas responds to drug
72. All of the following are bacteriostatic except:
- Linezolid
 - Vancomycin
 - Erythromycin
 - Tigecycline
73. Amphotericin-B acts on:
- Fungal cell wall
 - Fungal cell membrane
 - Fungal nucleic acid
 - Fungal 30S ribosome
74. Antiviral drug acting on both HIV and HBV is:
- Emtricitabine
 - Abacavir
 - Acyclovir
 - Enfuvirtide
- 75a. Prasugrel as compared to clopidogrel:
- Longer acting
 - No active metabolite
 - Safe in patients with cerebrovascular accident
 - Not affected by CYP2C19 genetic polymorphism
- 75b. Ticagrelor as compared to clopidogrel:
- Inhibits cyclooxygenase reversibly
 - Inhibits cyclooxygenase irreversibly
 - Inhibits P2Y₁₂ reversibly
 - Inhibits P2Y₁₂ irreversibly
76. Apixaban acts by inhibiting:
- Vitamin K
 - Factor VIIIa
 - Factor Xa
 - Thrombin

- 77a. Which of the following test is used for laboratory monitoring of enoxaparin?
 a. APTT
 b. Bleeding time
 c. PT/INR d. None of the above
- 77b. Drug monitoring is required for:
 a. Fondaparinux
 b. Dalteparin
 c. Enoxaparin d. Lepirudin
78. Basiliximab acts on:
 a. IL-2R
 b. IL-6R
 c. CD-20
 d. VEGF
79. Which of the following muscle relaxant has α -2 adrenergic agonistic action?
 a. Baclofen
 b. Tizanidine
 c. Dantrolene
 d. Atracurium
80. Mechanism of action of curare like drug [d-tubocurarine] is:
 a. Continuous excitation of membrane
 b. Stimulation of Ca^{2+} gated channel
 c. Inhibition of acetylcholine
 d. Inhibition of Cl^{-} channel
81. Melanosis coli is caused by chronic use of which laxative?
 a. Bisacodyl
 b. Senna
 c. Magnesium hydroxide
 d. Magnesium sulphate
82. Colchicine used in acute gout acts by:
 a. Inhibiting purine metabolism
 b. Inhibiting leukocytic migration
 c. Increased uric acid excretion
 d. Decreasing synthesis of uric acid
83. Which of the following is glucocorticoid synthesis inhibitor?
 a. Flutamide
 b. Metyrapone
 c. Spironolactone
 d. Drospirenone
84. Which of the following should not be given along with sildenafil?
 a. Vasoconstrictors
 b. Vasodilators
 c. Danazol
 d. Dopamine
85. pKa of drug refers to:
 a. pH at which drug is 100% ionized
 b. pH at which drug is 50% ionized
 c. pH at which drug is 0% ionized
 d. pH at which drug is active
86. Mechanism of action of sacubitril:
 a. Inhibition of neprilysin
 b. Renin inhibitor
 c. ACE inhibitor
 d. Angiotensin receptor blocker
87. Niacin must be used in diabetics cautiously because:
 a. It causes hypoglycemia
 b. It impairs insulin sensitivity
 c. It increases skin thickness so difficult to find site for injectable drugs
 d. Increase metabolism of oral hypoglycemic agents
88. Which of the following atypical antipsychotics has maximum chances of causing hyperprolactinemia?
 a. Risperidone
 b. Clozapine
 c. Olanzapine
 d. Quetiapine
89. Anaerobes are intrinsically resistant to which of the following antibiotics?
 a. Metronidazole
 b. Penicillins
 c. Aminoglycosides
 d. Chloramphenicol
90. Which anti-tubercular drug can result in peripheral neuropathy due to deficiency of pyridoxine?
 a. Rifampin
 b. Ethambutol
 c. Isoniazid
 d. Pyrazinamide
91. Which of the following drug is implicated in causation of agranulocytosis?
 a. Alkylating agent
 b. Corticosteroids
 c. Paracetamol
 d. All of the above

MICROBIOLOGY

92. Nude mouse is used in immunological studies is protected by transplant rejection as it lacks:
 a. B-cells
 b. T-cells
 c. NK cells
 d. Both B and T cells
93. Gram-negative bacilli releasing histamine to cause Scombroid poisoning are all except:
 a. Klebsiella
 b. E.coli
 c. Vibrio vulnificus
 d. Proteus
94. Gram-negative bacillus, which can grow in acidic pH?
 a. Salmonella
 b. Streptococcus pneumoniae
 c. H. pylori
 d. Pseudomonas
95. Urea breath test is used for the diagnosis of:
 a. H. pylori
 b. C. Jejuni
 c. E. coli
 d. Proteus
96. Australia antigen in hepatitis B virus refers to:
 a. HBsAg
 b. HBcAg
 c. HBeAg
 d. HBxAg
97. Cutaneous larva migrans is most commonly caused by:
 a. Ancylostoma duodenale
 b. Ancylostoma braziliense
 c. Necator americanus
 d. Toxocara canis
98. Sabin-Feldman dye test is used for:
 a. Malaria
 b. Schistosomiasis
 c. Toxoplasmosis
 d. Babesiosis
99. For diagnosis of tuberculosis, only blood is used in:
 a. IFN- γ assay
 b. Gene Xpert MTB/RIF
 c. BACTEC
 d. Fluorescence microscopy
100. True about parvovirus is:
 a. Proliferates in T-cells
 b. Proliferates in erythroid progenitor cells
 c. Proliferates in megakaryocytes
 d. Proliferates in B-cells
101. Warthin-Finkeldey cells are seen in which infection?
 a. Rubella
 b. Chickenpox
 c. Measles
 d. Mumps

102. *Mycoplasma* is resistant to which of the following antibiotics?
 a. Aminoglycosides
 b. Chloramphenicol
 c. β -lactams
 d. Erythromycin
103. *Burkholderia cepacia* is resistant to:
 a. Polymyxin-b
 b. Trimethoprim-sulfamethoxazole
 c. Amoxicillin-clavulanic acid
 d. 3rd generation cephalosporins
104. Vector involved in transmission of the parasite shown in following image of peripheral blood smear from a patient:



- a. Anopheles mosquito
 b. Culex mosquito
 c. Sand fly
 d. Ixodid tick
105. Acute hemorrhage conjunctivitis is caused by which enterovirus?
 a. 69
 b. 70
 c. 71
 d. 72
106. Which of the following is an opsonin?
 a. C5a
 b. C3b
 c. C3a
 d. C5b
107. Transfer of genetic material in transduction occurs through:
 a. Transposons
 b. Plasmids
 c. Bacteriophage
 d. Fungal elements
108. Cryoglobulinemia is seen in infection with which hepatitis virus?
 a. HAV
 b. HBV
 c. HCV
 d. HDV

FORENSIC MEDICINE

109. Basisoociput fuses with basisphenoid at the age of:
 a. 10-15 years
 b. 15-18 years
 c. 18-22 years
 d. 22-25 years
110. Last skull suture to close is:
 a. Frontal suture
 b. Sagittal suture
 c. Coronal sutures
 d. Occipital sutures
111. Earliest organ to putrefy:
 a. Kidney
 b. Brain
 c. Heart
 d. Prostate

112. Odour of mummification is:
 a. Pungent
 b. Fishy
 c. Rotten
 d. Odourless
113. McNaughten's rule is included in which section?
 a. IPC 84
 b. IPC 84A
 c. CrPC 84
 d. CrPC 85
- 114a. Bluish discoloration of stomach mucosa is seen in postmortem finding of which poisoning?
 a. Arsenic
 b. Oxalic acid
 c. Sodium amytal
 d. Lead
- 114b. Bluish discoloration of stomach mucosa is seen in postmortem finding of which poisoning?
 a. Arsenic
 b. Oxalic acid
 c. Copper
 d. Lead
115. Proximal tubular damage is caused by all of the following except:
 a. Lead
 b. Mercury
 c. Cadmium
 d. Phosphorus
- 116a. Locard's method is used for identification of:
 a. Fingerprints
 b. Age
 c. Sex
 d. Stature
- 116b. Locard's exchange principal is used for:
 a. Diagnosis of poisoning
 b. Identification of rape accused
 c. Estimation of age
 d. Postmortem identification
117. Posthumous child is one who is:
 a. Born after the death of father
 b. Having two fathers
 c. Born by superfecundation
 d. Born after the death of mother

PSM

118. Children are protected under all articles, except:
 a. 24
 b. 39
 c. 42
 d. 45
119. Government initiative to obtain TB data on web-based software is named as:
 a. Nirbhay
 b. Nikshay
 c. Nischay
 d. E-DOTS
120. The most peripheral TB diagnostic center unit is:
 a. District TB center
 b. Tubercular unit
 c. Designated microscopic center
 d. Central TB division
121. Under WHO global monitoring framework for prevention and control of non-communicable diseases, relative reduction in prevalence of hypertension by 2025 is set at:
 a. 10%
 b. 15%
 c. 20%
 d. 25%
122. Number of persons affected after contact with primary case within the limit of the one incubation period:
 a. Attack rate
 b. Primary attack rate
 c. Secondary attack rate
 d. Tertiary attack rate

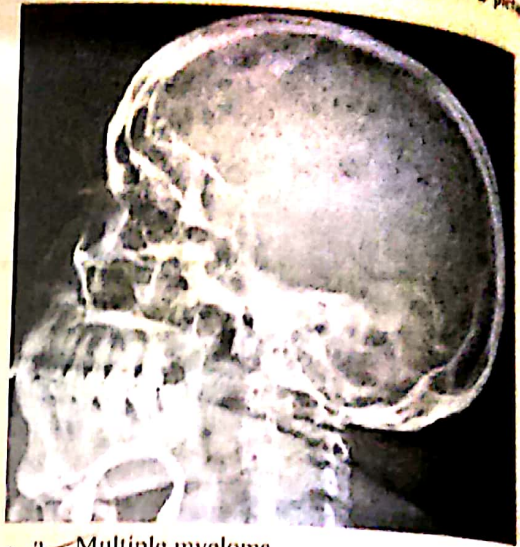
123. In a population of 1000 people, a screening test to detect diabetes is introduced, which detected 90 positive cases. When gold standard diagnostic test was implemented 100 cases came out to be positive. What is the sensitivity of given screening test?
 a. 90/100
 b. 10/100
 c. 90/1000
 d. 10/1000
124. Unit of study in ecological study is:
 a. Individual
 b. Family
 c. Population
 d. Patient
125. Mission Indradhanush included all of the following vaccines except:
 a. Measles
 b. Tuberculosis
 c. Tetanus
 d. Meningococcus
126. If two live vaccines have to be given at same site, they should be given with a time gap of at least:
 a. 1 week
 b. 3 weeks
 c. 6 weeks
 d. 8 weeks
127. True about measles vaccination is:
 a. Live vaccine is given after 4 weeks if passive immunization is given
 b. Measles vaccine is absolutely contraindicated in HIV infected patients
 c. Time to develop immunity after vaccination is 11-12 days
 d. For eradication of measles, vaccine coverage should be > 85%
128. Vaccine contraindicated in AIDS patient is:
 a. DPT
 b. IPV
 c. HBV
 d. Measles
129. Prophylaxis of choice of meningococcus:
 a. Rifampicin
 b. Chloramphenicol
 c. Ciprofloxacin
 d. Erythromycin
- 130a. Disinfectant activity of bleaching powder is due to:
(NEET PG 2020, 2018)
 a. Hydrogen ion
 b. Hypochlorous acid
 c. Hypochlorite ion
 d. Hydrochloric acid
- 130b. Disinfecting action of chlorination of water is due to:
(NEET PG 2020, 2018)
 a. Hydrogen ion
 b. Hypochlorous acid
 c. Hypochlorite ion
 d. Hydrochloric acid
131. Which of the following is not responsible for hardness of water?
 a. Calcium carbonate
 b. Calcium bicarbonate
 c. Magnesium chloride
 d. Calcium sulfate
132. In a cancer treatment survival, rate of new modality of radiation is compared to standard therapy, which shows better result with p-value = 0.4. What is true?
 a. Newer modality is more effective
 b. Standard modality is more effective
 c. Power of statistical test is 60%
 d. Data is inadequate to be commented
133. In comparative studies, non-parametric tests:
 a. Are used in data with skewed deviation
 b. Contains complex mathematical calculations
 c. Are better as compared to parametric tests
 d. Used for simple linear regression analysis
134. Which of the following is true about Factories Act?
 a. Prohibits employment of children below 14 years in dangerous industries
 b. Prohibits children employment below 14 years in the factories
 c. Maximum working hours for adolescent is 72 hours per week
 d. Children are entitle for 2 holidays a week
135. 100 women were on some contraceptive for 2 years. 10 of them got conceived during that period. What is the Pearl index?
 a. 2
 b. 3
 c. 4
 d. 5
136. Which of the following is not considered as high-risk mother in antenatal care (ANC)?
 a. Multiple pregnancy
 b. Pre-eclampsia
 c. History of treatment of infertility
 d. Cardiovascular disease
137. Pasteurization of milk is done at:
 a. 100°C for 10 minutes
 b. 72°C for 20 minutes
 c. 63°C for 30 minutes
 d. 56°C for 40 minutes
138. Recommended daily allowance for iodine during pregnancy is (microgram/day):
(NEET PG 2018, AIIMS November 2013)
 a. 100
 b. 150
 c. 200
 d. 250
139. Lethal BMI for adult males is:
 a. 11
 b. 13
 c. 15
 d. 17
140. Kala-azar is not endemic in:
 a. West Bengal
 b. Uttar Pradesh
 c. Assam
 d. Bihar
141. Cytotoxic drugs are discarded by:
 a. Incineration > 1200°C
 b. Deep burial
 c. Detoxification and chemical process
 d. Autoclaving and dry heating

MEDICINE

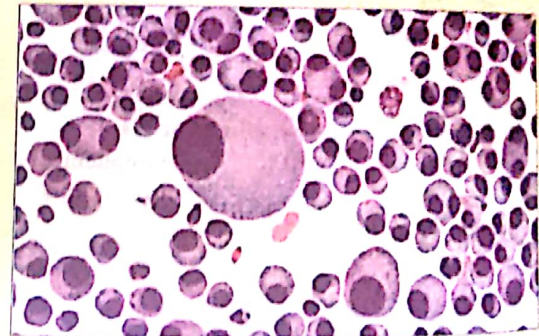
142. All of the following are true regarding passive leg raising test except:
 a. Legs are held passively for 30 seconds
 b. Can be done in conscious spontaneous breathing patients
 c. Type of auto transfusion from lower limb
 d. Turned from 45° semi recumbent position to 45° passive leg raising

- 143a. Foley's catheter induced urinary tract infection in a female is best treated by:
- Ampicillin
 - Second generation cephalosporin
 - Third generation cephalosporin
 - Tigecycline
- 143b. A bed ridden female patient with catheter related UTI by beta-lactamase producing *Klebsiella pneumoniae*. Which of the following drug will you choose?
- Ampicillin
 - β -lactams and β -lactamase inhibitors
 - 2nd generation cephalosporins
 - 3rd generation cephalosporins
144. Stunned myocardium without perfusion defect is seen in:
- Hypertrophic obstructive cardiomyopathy
 - Takotsubo cardiomyopathy
 - Dilated cardiomyopathy
 - Diphtheritic myocarditis
- 145a. Which of the following is a cause of AV nodal block?
- Hypothyroidism
 - Cushing syndrome
 - Hyperthyroidism
 - Acromegaly
- 145b. Atrioventricular heart block is seen in all of the following conditions, *except*:
- Coronary artery disease
 - Sarcoidosis
 - Cushing syndrome
 - Hypothyroidism
146. True about partial pericardial agenesis are all *except*:
- Less common than total agenesis
 - May be associated with bicuspid aortic valve
 - MRI is the radiological investigation of choice
 - Normal location of cardiac silhouette
- 147a. Permanent cardiac pacing is helpful in:
- Brugada syndrome
 - Post myocardial infarction with decreased ejection fraction
 - Ventricular fibrillation
 - Asystole
- 147b. Implantable cardioverter defibrillator is useful in:
- Brugada syndrome
 - Arrhythmogenic RV dysplasia
 - Post MI with structural damage
 - All of the above
- 148a. Myasthenia gravis is due to:
- Increased acetylcholinesterase
 - Antibiotics against acetylcholinesterase
 - Antibodies against acetylcholine receptors
 - Decreased uptake of acetylcholinesterase
- 148b. Neostigmine used in myasthenia gravis acts by:
- Acting as muscarinic agonists
 - Acting as nicotinic agonist
 - Inhibiting cholinesterase
 - Acting on selective β_2 receptors

- 149a. A 70 years old male presented with bone pain since 2 years. Skull X-ray is showing following picture. What is the diagnosis?

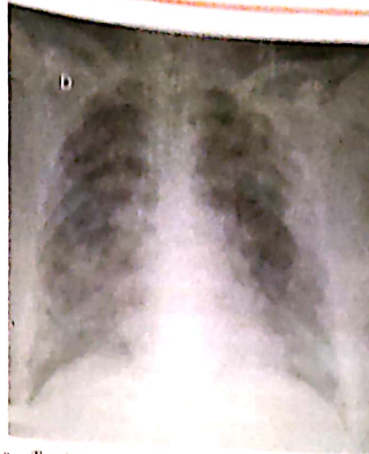


- Multiple myeloma
 - Eosinophilic granuloma
 - Metastasis from prostate
 - Tubercular osteomyelitis
- 149b. Biopsy of the marrow of a patient is shown below. What is the likely haematological disease associated with it?



- Myelofibrosis
 - Metastatic cancer
 - Multiple myeloma
 - Myelodysplastic syndrome
150. Which of the following is seen in the kidney in shock?
- Increased GFR
 - Increased renal blood flow
 - Afferent arteriole constriction
 - Increased urine output
151. "Pseudo P-pulmonale" on ECG is seen in:
- Hypokalemia
 - Hyperkalemia
 - Hypocalcemia
 - Hypomagnesemia
152. Which of the following is the part of AIDS related complex?
- Genital candidiasis
 - Abortion
 - Pelvic inflammatory disease
 - None

153. Mean time between acquiring HIV infection and development of full-blown AIDS is:
 a. 5 years
 c. 10 years
 b. 7.5 years
 d. 15 years
154. Characteristic feature of 3rd nerve involvement in diabetes is:
 a. Proptosis
 b. Lagophthalmos
 c. Medial rectus paralysis
 d. Pupillary reaction preserved
155. Which of the following is not true about Weber's syndrome?
 a. Dorsal midbrain involvement
 b. Ipsilateral 3rd nerve palsy
 c. Contralateral hemiplegia
 d. Cerebral peduncles involvement
156. Gold's criteria for severe COPD:
 a. $FEV_1/FVC < 0.7$; $FEV_1 > 80\%$
 b. $FEV_1/FVC < 0.7$; $FEV_1 < 80\%$
 c. $FEV_1/FVC < 0.7$; $FEV_1 < 50\%$
 d. $FEV_1/FVC < 0.7$; $FEV_1 < 30\%$
157. Which of the following is not a feature of allergic bronchopulmonary aspergillosis?
 a. Recurrent pneumonia
 b. Skin rash
 c. Frequent fever, sneeze
 d. Raised IgE levels
- 158a. Drug of choice for treatment of resistant rheumatic chorea:
 a. Haloperidol
 c. Valproate
 b. Risperidone
 d. Phenytoin
- 158b. Treatment of choice for drug resistant rheumatic chorea:
 a. Haloperidol
 c. Valproate
 b. IV immunoglobulin
 d. Phenytoin
159. Roth spots on fundal examination is seen in:
 a. Retinal hemorrhage
 b. Uveal melanoma
 c. Leukemia
 d. CML
160. Most common orbital fungal infection in patients with diabetic ketoacidosis:
 a. Mucor
 b. Candida
 c. Aspergillus
 d. Cryptococcus
161. All of the following are features of neurofibromatosis-1 *except*:
 a. Acoustic neuroma
 b. Pseudoarthrosis of tibia
 c. Lisch nodule
 d. Scoliosis
162. All of the following are correct about ARDS *except*:
 a. $PaO_2/FiO_2 < 200$ mm Hg
 b. PCWP > 18 mm Hg
 c. Acute onset of illness
 d. Bilateral alveolar infiltrates
163. A patient in ICU was given blood transfusion. Three hours later patient developed dyspnea, $PaO_2/FiO_2 < 300$ mm Hg and is showing following chest X-ray. What is the diagnosis?



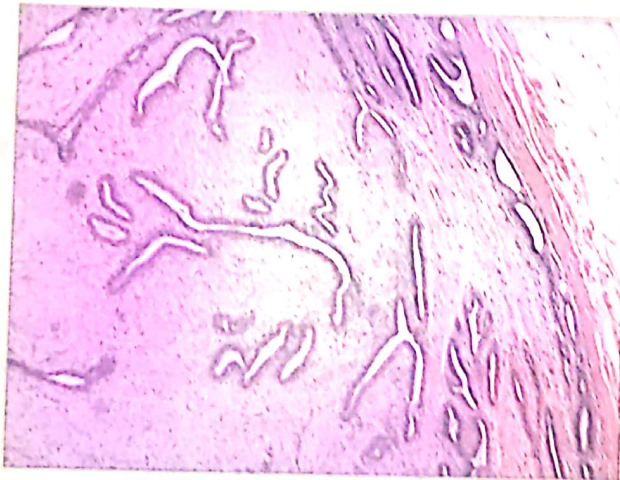
- a. Tension pneumothorax
 b. Transfusion associated lung injury
 c. Mismatch blood transfusion
 d. Circulatory overload
164. Following are true about transfusion associated fluid overload, *except*:
 a. Elevated level of BNP
 b. Elevated PCWP
 c. Diuretics for treatment
 d. Intravenous fluid is required for management
- 165a. Which of the following is not a feature of Alzheimer's disease?
 a. Extracellular plaque
 b. Intracellular neurofibrillary tangles
 c. Short-term memory loss
 d. None of the above
- 165b. Which of the following is the pathognomonic feature of Alzheimer's disease?
 a. Lewy body
 b. Plaques and tangles
 c. Pick bodies
 d. Red neuronal degeneration
166. A 50 years old male presenting with skin rash and glomerulonephritis. What should be the next investigation?
 a. ANCA
 b. HBsAg
 c. Anti-HBsAg
 d. Anti-HCV
167. Decreased bone resorption in osteoporosis is caused by all of the following *except*:
 a. Raloxifene
 b. Teriparatide
 c. Strontium
 d. Risedronate
168. Which of the following is true about Brown-Sequard syndrome?
 a. Contralateral loss of proprioception, fine touch vibration
 b. Contralateral paralysis
 c. Ipsilateral loss of pain and temperature
 d. Contralateral loss of pain and temperature

SURGERY

169. What is the name of procedure in which the probe is inserted and dilated lactiferous duct is excised?
- a. Macrodochectomy
 - b. Microdochectomy
 - c. Hadfield's operation
 - d. Cone excision

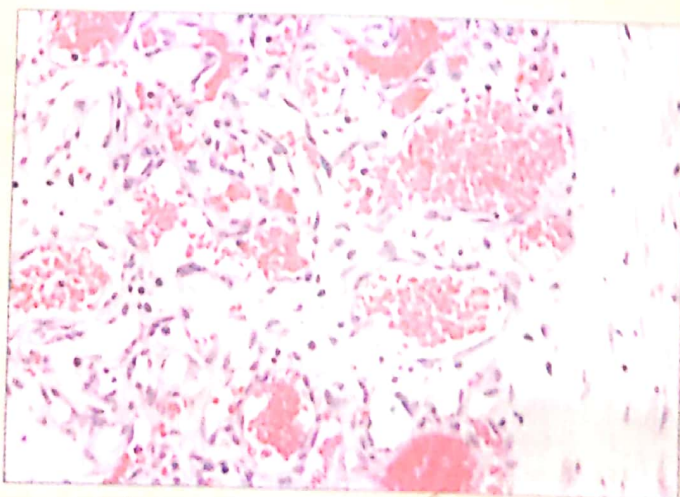
170. Van-Nuys prognostic index for DCIS does not include:
- a. Age
 - b. Size
 - c. Surgical margins
 - d. Estrogen receptor status

171a. A 26 years old female came with a single painless mobile lump measuring 4 cm in left breast. Microscopy showed the following picture. What is the diagnosis:



- a. Carcinoma breast
- b. Fibroadenoma
- c. Fibroid
- d. Fibrocystic disease

171b. A teenager has a progressively increasing reddish swelling on his chest. Its histological appearance is given below. Which of the following is the likely diagnosis?



- a. Lipoma
- b. Hemangioma
- c. Fibroadenoma
- d. Fibroma

172a. Which of the following is not true about Grave's disease?

- a. Sluggish reflexes
- b. Exophthalmos
- c. Diarrhea
- d. Tachypnea

172b. All of the following are true about Grave's disease except:

- a. More common in males
- b. Autoimmune in etiology
- c. May result in hyperthyroidism
- d. Non-thyroid manifestation can also be seen

173. Increased vanillylmandelic acid (VMA) is seen in:

- a. Cushing's syndrome
- b. Pheochromocytoma
- c. Acromegaly
- d. Carcinoid syndrome

174. Adult form of Echinococcus granulosus live in:

- a. Man
- b. Sheep
- c. Dog
- d. Pig

175a. In a case of acute pancreatitis with hypovolemic shock, the first treatment administered is:

- a. Central line & isotonic crystalloid solution
- b. Wide bore peripheral line & hypertonic colloids
- c. Urgent plan for laparotomy
- d. ERCP

175b. Initial management in case of pancreatitis with shock:

- a. Hypotonic fluid
- b. Isotonic crystalloid fluid
- c. Hypertonic fluid
- d. Colloid fluid

176. Most common cause of chronic pancreatitis:

- a. Alcoholism
- b. Pancreatic duct stone
- c. Viral infection
- d. Hepatic disease

177. Best investigation for malignant tumor of head of pancreas:

- a. EUS guided biopsy
- b. USG guided biopsy
- c. MRI guided biopsy
- d. Laparoscopic biopsy

178. Heller's operation is done for:

- a. Zenker's diverticulum
- b. Achalasia cardia
- c. Esophageal stricture
- d. Barrett esophagus

179a. Feline esophagus is seen in:

- a. GERD
- b. Achalasia
- c. Herpetic esophagitis
- d. Radiation induced esophagitis

179b. Feline esophagus is seen in:

- a. Eosinophilic esophagitis
- b. Achalasia
- c. Herpetic esophagitis
- d. Radiation induced esophagitis

180. Most common site of chronic gastric ulcer:

- a. Lesser curvature
- b. Greater curvature
- c. Antrum
- d. Fundus

181a. Pyloric stenosis is best palpated during:

- a. Feeding
- b. Crying
- c. Sleeping
- d. Standing

181b. Palpation of pyloric stenosis is best by:

- a. Supine in mother's lap
- b. Laterally in mother's lap
- c. Any position in mother's lap
- d. Prone

182. Which of the following is the most common cause of upper gastrointestinal bleeding?

- a. Esophageal varices
- b. Carcinoma stomach
- c. Peptic ulcer
- d. Barrett esophagus

183. Which of the following is the true about upper GI bleed?

- a. Endoscopic ligation is not done
- b. Most common cause is variceal bleeding
- c. Bleeding up to ampulla of Vater
- d. Rockall scoring is used for risk stratification

184. Most common epithelial stomach tumor is:

- a. GIST
- b. Carcinoid syndrome
- c. Glomus tumor
- d. Adenocarcinoma

185. Increased 5-hydroxyindole acetic acid (HIAA) in urine is seen in:

- a. Cushing's syndrome
- b. Pheochromocytoma
- c. Acromegaly
- d. Carcinoid syndrome

186. Earliest feature of Crohn's disease:

- a. Aphthous ulcer
- b. Deep fissure ulcer
- c. Cobblestone appearance
- d. Rose thorn appearance

187a. All of the following are true about Crohn's disease except:

- a. Involves bowel in continuous fashion
- b. Rectal sparing
- c. Transmural involvement
- d. Respond to antibiotics

187b. True about ulcerative colitis is:

- a. Surgery is palliative
- b. Rectal sparing
- c. Respond to antibiotics very well
- d. Involves bowel in continuous fashion

188. Cowden syndrome is associated with mutation of:

- a. P53
- b. Rb
- c. PTEN
- d. K-ras

189. Chronic laxative use causes which type of urinary stone?

- a. Calcium oxalate
- b. Xanthine

190. The radio-opaque structure in given X-ray is inserted after which procedure?



- a. Removal of hypernephroma
- b. ESWL for renal stones
- c. After chemotherapy of Wilm's tumor
- d. All of the above

191a. A 60-year-old male presenting with complaints of hesitancy, decreased urinary stream, and sensation of incomplete bladder emptying. Retrograde urethrogram of the patient is showing following image. What is the diagnosis?



- a. Benign prostatic hyperplasia
- b. Urethral stricture
- c. Bladder stones
- d. Urethral stones

191b. A 60-year-old man presented with intermittent painful voiding of urine. What is the diagnosis based on clinical picture and the given image?



- a. Bladder stone
- b. Ureteric stone
- c. Prostate calcification
- d. Schistosomiasis

192. Which of the following bacteria is a common cause of acute prostatitis?

- a. Peptostreptococci
 b. S. agalactiae
 c. E. coli
 d. S. agitans

193a. Falsely high ankle brachial index is seen in:

- a. Atherosclerosis
 b. Calcified vessels
 c. Thrombosis
 d. All of the above

193b. Abnormally high ankle brachial index is seen in:

- a. Calcified vessels
 b. Buerger's disease
 c. Critical limb ischaemia
 d. Takayasu arteritis

194. In asymptomatic abdominal aortic aneurysm in a fit patient, surgery must be done if the diameter is greater than:

- a. 25 mm
 b. 30 mm
 c. 35 mm
 d. 55 mm

195. Which of the following is the best graft for femoropopliteal bypass?

- a. Reversed autogenous saphenous vein graft
 b. Dacron graft
 c. Polypropylene graft
 d. None

196. Which of the following is associated with factor V Leiden mutation?

- a. GI bleeding
 b. Thromboembolic events
 c. Hemophilia
 d. Hemarthrosis

197. A 65-year-old patient was bed ridden since 2 months. He developed sudden onset of breathlessness and died. CT scan of thorax is showing following image. What is the diagnosis?



- a. Aortic dissection
 b. Ruptured aortic aneurysm
 c. Pulmonary embolism
 d. Tracheal compression

198. Tumor not present in the anterior mediastinum:

- a. Lymphoma
 b. Thymoma
 c. Neurogenic tumors
 d. Thyroid mass

199. According to Parkland formula, calculate the required RL in first 8 hours for a 50 kg man having 40% of second-degree burns?

- a. 4000 mL
 b. 9000 mL
 c. 1000 mL
 d. 8000 mL

200. Which of the following is true about keloid?

- a. Extends out of the border of wounds
 b. Decreased growth factors
 c. More common in Whites
 d. Regress spontaneously

201. A 14-year-old male presents with headache and visual disturbances. CT sella image is given below. What is the most probable diagnosis?



- a. Pituitary apoplexy
 b. Craniopharyngioma
 c. Glioblastoma multiforme
 d. Astrocytoma

202. Calculate the GCS in the patient of RTA, who is confused, opening eyes to painful stimulus, decort response to stimulus without exact localisation:

- a. 8
 b. 9
 c. 10
 d. 11

203. Which of the following is true about traumatic brain injury?

- a. Most benefit if early surgery is for EDH & SDH
 b. Depressed fractures also benefit from early surgery
 c. Lucid interval is characteristic of intracerebral haemorrhage
 d. Bleeding is from middle meningeal artery in subdural haemorrhage

204. In compartment syndrome, which of the following is released during fasciotomy?

- a. Skin only
 b. Skin + subcutaneous tissue
 c. Skin + subcutaneous tissue + superficial fascia
 d. Skin + subcutaneous tissue + superficial fascia + deep fascia

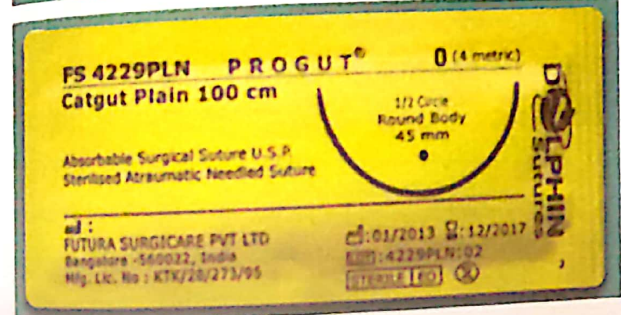
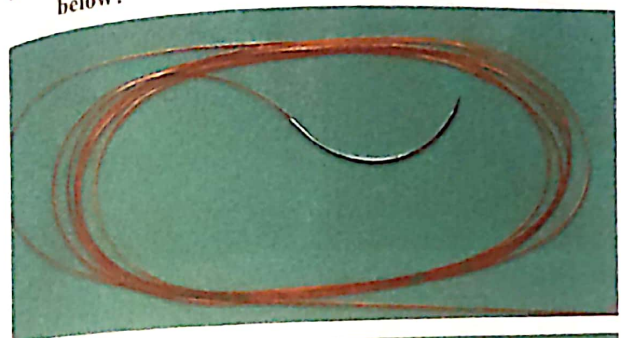
205. Hyperacute graft rejection occurs within:

- a. 24 hours
- b. 1 week
- c. 1 month
- d. 1 year

206. Category 3 donor after circulatory death refers to:

- a. Brain dead patient
- b. Patient awaiting cardiac arrest
- c. Death in hospital inpatient ward
- d. Death on arrival at hospital

207. Which of the following is true about the suture given below?



- a. Made from mucosa of sheep
- b. Made from mucosa of cat
- c. Not destroyed by neutrophilic cells
- d. It is a synthetic suture

208a. A 6-year-old-male with obstructed inguinal hernia was opened and gangrenous bowel was found. Instruction to surgeon for resection anastomosis include all *except*:

- a. Suturing is done with catgut
- b. Stapler or polyglactin can be sued for suturing
- c. Cut edged must be examined for viability
- d. Intestinal clamps may be sued for isolating the loop that has to be excised

208b. A 6-year-old-child was brought to the hospital with obstructed hernia. On exploration, bowel was found gangrenous. Which of the following is true about anastomosis?

- a. Should be done by continuous layers as it takes less time
- b. Done with catgut
- c. Should be done by using single layer seromuscular Lambert sutures
- d. Single layer taking submucosa

209. Identify the instrument given below:



- a. Czerny retractor
- b. Morris retractor
- c. Cats paw retractor
- d. Doyen's retractor

OBSTETRICS AND GYNECOLOGY

210. Acute fatty liver of pregnancy occurs in:

- a. 1st trimester
- b. 2nd trimester
- c. 3rd trimester
- d. Post pregnancy

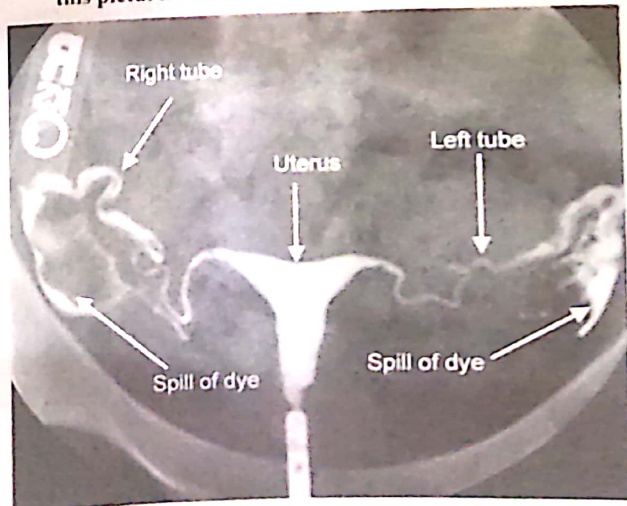
211. Superfecundation is:

- a. 2 sperms fertilizes 1 ovum
- b. 2 sperms fertilizes 2 ova in the same cycle
- c. 2 sperms fertilizes 2 ova in the different cycles
- d. Splitting of 1 zygote

212. Human papilloma virus frequently affects which part of female genital tract?

- a. Cervix
- b. Uterus
- c. Vagina
- d. Fallopian tube

213. A 35 years old patient, a case of primary infertility has undergone the investigation, whose image is shown in this picture. Which investigation is being done?



- a. Hysterosalpingogram
- b. USG guided salpingogram
- c. CT hysteroqram
- d. MR hysteroqrphy

- b. Dizygotic twins
- c. Conjoint twins
- d. Fetus papyraceus

215. ART guidelines for pregnant females:
- a. Start ART after 1st trimester and continue lifelong
 - b. Start ART immediately irrespective of trimester and continue lifelong
 - c. Start ART immediately and continue till 6 weeks after child birth
 - d. Start ART after 1st trimester and continue till 6 weeks after child birth

216. Correct placement of ring pessary is indicated by all of the following *except*:
- a. Two fingers are inserted between the posterior fornix and pubic notch
 - b. Able to urinate after pessary insertion
 - c. Fingertip sliding between pessary and lateral vaginal wall
 - d. Sensation of pessary in situ while walking

217. What happens to thyroid levels in pregnancy?
- a. Decreased total T3
 - b. Decreased total T4
 - c. Decreased TSH
 - d. TBG increases

218. Ideal time for a quadruple test is:
- a. 8-10 weeks
 - b. 10-12 weeks
 - c. 12-14 weeks
 - d. 15-16 weeks

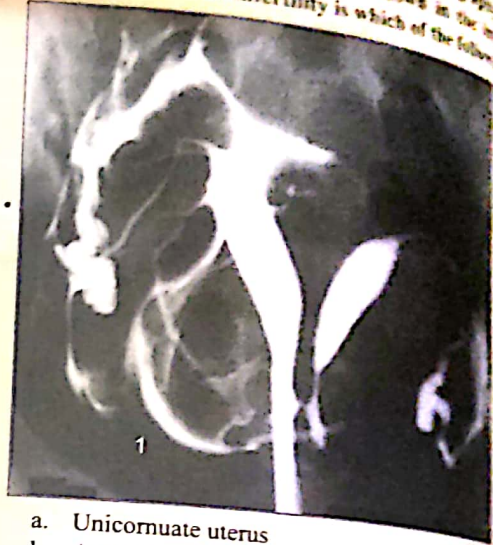
219. Which of the following is not a cause secondary postpartum hemorrhage?
- a. Placenta previa
 - b. Retained cotyledons
 - c. Placental polyp
 - d. Endometritis

- 220a. Which of the following anomalies is shown in the picture?



- a. Bicornuate uterus
- b. Septate uterus
- c. Unicornuate uterus
- d. Cornual block

...with history of previous infertility of 2 years. Hysterosalpingogram is done and the findings are as shown in the image. The cause of her infertility is which of the following?

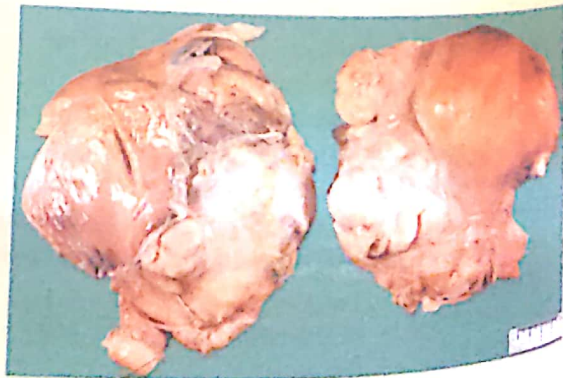


- a. Unicornuate uterus
- b. Arcuate uterus
- c. Septate uterus
- d. Uterus didelphys

- 221a. Pre-implantation genetic test in artificial reproductive technology is used in all *except*:
- a. Advanced age
 - b. To diagnose translocations
 - c. To detect aneuploidy
 - d. Oocyte before implantation

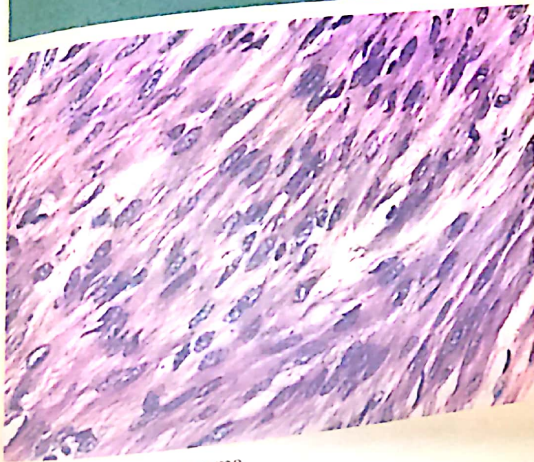
- 221b. Fetal DNA in maternal blood prenatal test is done:
- a. If trisomy is suspected
 - b. Done before 7 weeks of gestation
 - c. As the number of fetal cells that leak into maternal circulation is high
 - d. DNA from fetal cells circulating in mother blood is used

- 222a. Which of the following is the likely diagnosis of the patient with the cut section of the specimen as shown in the picture?



- a. Adenomyosis
- b. Leiomyosarcoma
- c. Uterine cancer
- d. Ectopic pregnancy

222b. A female has undergone hysterectomy with the following gross and histological features. Which of the following is the most likely diagnosis?



- a. Leiomyosarcoma
- b. Leiomyoma
- c. Mixed mullerian tumor
- d. Vaginal carcinoma

223. Complications of pelvic inflammatory disease (PID) include all *except*:
- a. Future infertility
 - b. Chronic ill health
 - c. Appendicitis
 - d. Intestinal obstruction
224. Dilatation and curettage is not done in:
- a. PID
 - b. Perimenstrual
 - c. Postmenopausal
 - d. Abortion
225. Sacrospinous ligament strengthening in surgery for pelvic organ prolapsed is part of strengthening of:
- a. Anterior component
 - b. Posterior component
 - c. Lateral component
 - d. Apical component

226a. Which of the following drug is not safe for hypertension during pregnancy in a patient with asthma?

- a. Alpha methyl dopa
- b. Nifedipine
- c. Atenolol
- d. Labetalol

226b. Which of the following drug should not be used in pregnant female with hypertension?

- a. Labetalol
- b. Hydralazine
- c. Methyl dopa
- d. Propranolol

227. Fimbriectomy method is described as:

- a. Uchida method
- b. Irvine method
- c. Parkland method
- d. Kroener method

228a. A postpartum female complains of paraesthesia over the anterolateral aspect of the thigh. Which of the following nerve is involved?

- a. Anterior cutaneous nerve of thigh
- b. Lateral cutaneous nerve of thigh
- c. Popliteal nerve
- d. Common peroneal nerve

228b. Nerve injury during labour in mother can cause:

- a. Foot drop
- b. Median nerve injury
- c. Wrist drop
- d. Ulnar nerve injury

229. Most common indication for hormone replacement therapy is:

- a. Post menopausal bleed
- b. Hot flushes
- c. Dyslipidemia
- d. Cardioprotection

230. Peripartum cardiomyopathy is manifested at:

- a. Postpartum 5 months
- b. Postpartum 7 days
- c. Postpartum 6 weeks
- d. 2nd trimester of pregnancy

231. Shoulder dystocia is corrected by:

- a. Rotating posterior shoulder 90
- b. Fundus pressure
- c. Immediate cesarean section
- d. Acute flexion of thighs over abdomen

232. Mechanism of action of progestin only pills:

- a. Prevents ovulation
- b. Thickens cervical mucus
- c. Inhibits tubal motility
- d. Prolongs luteal phase

- 233a. Twin pregnancy is best described by ultrasound during:
- 10-12 weeks
 - 14-16 weeks
 - 16-20 weeks
 - 26-30 weeks
- 233b. Best time to determine the zygosity and amnionicity in twin pregnancy by USG:
- First trimester
 - Second trimester
 - Third trimester
 - Term
- 234a. True about extra-mammary Paget's disease of vulva are all *except*:
- Intraepidermal neoplasm
 - Arise from eccrine glands
 - Affects old women
 - Treatment is surgical excision
- 234b. Extra-mammary Paget's disease is seen in:
- Ovary
 - Uterus
 - Vagina
 - Vulva
235. Heartbeat in the fetus can be detected earliest by:
- 4-6 weeks
 - 12-14 weeks
 - 14-16 weeks
 - 21-24 weeks

PAEDIATRICS

236. Which of the following represents ovo-testicular syndrome (true hermaphroditism)?
- 47/XXY hypoactive gonad, gynecomastia
 - 45/X streak gonad, gynecomastia
 - 46/XX, 46/XY ovotestis gynecomastia
 - 45/X, 46/XY mosaic, gynecomastia
237. Most common outcome of congenital adrenal hyperplasia:
- Male pseudohermaphroditism
 - Female pseudohermaphroditism
 - True hermaphroditism
 - Precocious puberty
238. A newborn with respiratory distress was given suctioning and tactile stimulation. The neonate has heart rate <60/minute. What should be next management?
- Ventilation with mask
 - Ventilation with chest compression
 - Ventilation with chest compression with adrenaline
 - Mouth to mouth breathing
239. A child with weight of 4 kg is having diarrhea. He is thirsty, with loss of skin turgor, dry tongue and dry sunken eyes. His skin retracts back to normal 2 seconds after the pinching. What should be the next line of management?
- IV Ringer lactate 100 mL/kg over 6 hours
 - IV Ringer lactate, 400 mL over 6 hours
 - Oral ORS 300 mL over 4 hours
 - Oral ORS 30 mL/kg over 4 hours
240. Respiratory distress syndrome in newborn is characterized by all of the following *except*:
- Severe hypoxemia
 - Presents within 7 days after birth
 - Reticulonodular shadow on chest X-ray
 - Hypertension prevents ARDS
241. Which of the following drug is given for maturation of fetal lung?
- Dexamethasone
 - Hydrocortisone
 - Indomethacin
 - Prednisolone
242. Dactylitis in children is most commonly due to:
- Thalassemia
 - Hemophilia
 - ITP
 - Sickle cell anemia
- 243a. In Bartter syndrome, defect is present in which part of kidney?
- Proximal tubule
 - Descending limb of loop of Henle
 - Ascending limb of loop of Henle
 - Collecting duct
- 243b. A young child with mental retardation, hypokalemia and metabolic alkalosis suggests the diagnosis of:
- Gitelman syndrome
 - Bartter syndrome
 - Liddle syndrome
 - Fanconi syndrome
244. A newborn presents with left to right shunt and high output cardiac failure. MRI image of brain is showing the following picture. What is the diagnosis?
- (NEET PG 2018, HIMC November 20)



- Dandy-Walker syndrome
- Pneumocephalus
- Vein of Galen malformation
- Sturge-Weber syndrome

ORTHOPAEDICS

245. De-Quervain's tenovaginitis involves tendon sheath of which two muscles?

- a. Abductor pollicis longus and extensor pollicis brevis
- b. Abductor pollicis longus and extensor pollicis longus
- c. Abductor pollicis brevis and extensor pollicis brevis
- d. Abductor pollicis brevis and extensor pollicis longus

246. Fallen fragment sign is seen in:

- a. Osteosarcoma
- b. Ewing's sarcoma
- c. Aneurysmal bone cyst
- d. Simple bone cyst

247. Tom-Smith arthritis destroys:

- a. Acetabular roof
- b. Femoral capital epiphysis
- c. Femoral neck
- d. Greater trochanter

248a. Multifocal non-suppurative osteomyelitis is characterized by:

- a. Inflammation with purulent discharge
- b. No-inflammation with purulent discharge
- c. Inflammation without purulent discharge
- d. No-inflammation no purulent discharge

248b. Chronic multifocal non-suppurative osteomyelitis is characterized by:

- a. Large abscess and fever
- b. No abscess and discharge
- c. Cryptococcus is the most common cause
- d. No chronic inflammatory changes

249. An intern is working in busy casualty. Which of the following case of upper limb fracture, he would first show to an orthopaedic resident immediately?

- a. With reduced capillary refill
- b. Laceration of 3 x 10 cm
- c. Intra-articular fracture
- d. With wrist drop

250. Perilunate dislocation is defined as:

- a. Anterior dislocation of lunate with posterior dislocation of other carpal bones
- b. Posterior dislocation of lunate with anterior dislocation of other carpal bones
- c. Anterior dislocation of lunate and other carpal bones
- d. Posterior dislocation of lunate and other carpal bones

251. Recurrent gouty arthritis (Saturine gout) is seen in which metal poisoning?

- a. Lead

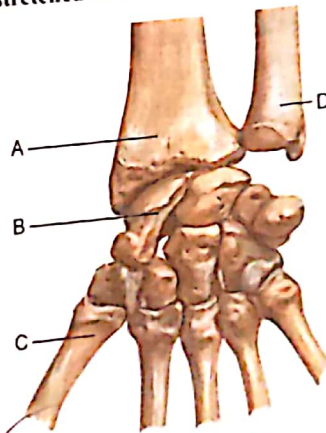
252a. Intra-articular pain is differentiated from extra-articular pain by:

- a. Presence of swelling
- b. Presence of crepitation
- c. Pain in active and passive motion
- d. Pain in active range of motion but not in passive range of motion

252b. Least likely to occur as extra-articular manifestation in seropositive rheumatoid arthritis:

- a. Neutropenia
- b. Hepatitis
- c. Interstitial pulmonary disease
- d. Constrictive pericarditis

253. In the given image, which bone would fracture by fall an outstretched hand?



- a. A
- b. B
- c. C
- d. D

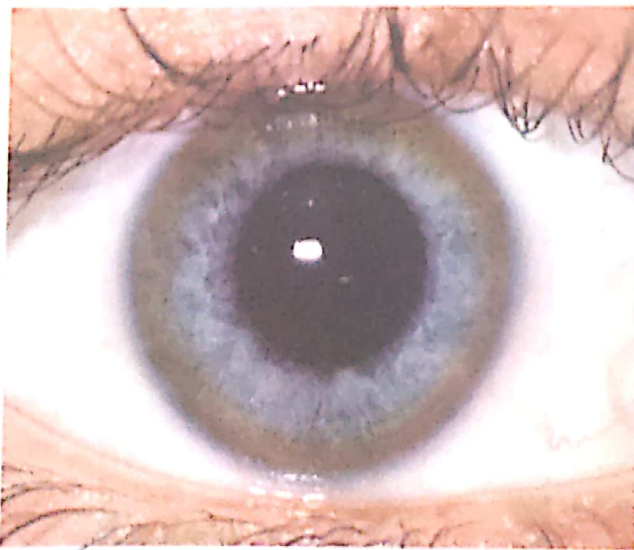
254. A 25 years old male with history of injury to leg 2 years back. He is complaining of pain and deformity of leg. X-ray of leg is showing following picture. What is the diagnosis?



- a. Ewing's sarcoma
- b. Osteosarcoma
- c. Malunited fracture tibia
- d. Chronic osteomyelitis

OPHTHALMOLOGY

255. Yoke muscle for right lateral rectus in dextroversion is:
- Right superior rectus
 - Left medial rectus
 - Left superior oblique
 - Right inferior oblique
256. Last field of vision to go in glaucoma:
- Nasal
 - Superior
 - Inferior
 - Temporal
257. 100 days glaucoma is:
- Neovascular glaucoma with CRVO
 - Neovascular glaucoma with CRAO
 - Glaucoma secondary to intraocular haemorrhage
 - Due to intumescent cataract
258. Most serious type of neonatal conjunctivitis, which can cause neonatal blindness is caused by:
- N. gonorrhoeae*
 - Chlamydia trachomatis*
 - Streptococcus pneumoniae*
 - Pseudomonas*
- 259a. Which of the following represent the right prescription for simple myopic astigmatism?
- +2D spherical, -1D cylindrical $\times 90^\circ$
 - 2D spherical, -1D cylindrical $\times 180^\circ$
 - 2D spherical, +2D cylindrical $\times 180^\circ$*
 - +1D spherical, -2D cylindrical $\times 90^\circ$
- 259b. A 50 years old male with ametropic eye due to presbyopia will require correction of:
- 1D
 - 2D*
 - 3D
 - 4D
260. A 12-year-old male child presents with features of hepatitis, imbalance and tremor. Eye examination of the child is showing following image. What is the best investigation for diagnosis of this condition?



- Serum ceruloplasmin level*
- $\alpha 1$ -antitrypsin level
- Sweat chloride level
- Urinary coproporphyrin level

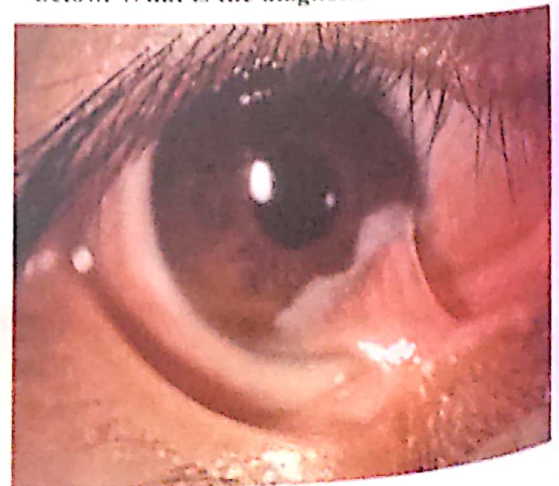
261. A 60-year-old male diabetic patient underwent cataract extraction surgery. After 36 hours of surgery, patient developed severe pain in eye with diminution of vision. Eye examination is showing following image. What would be the best initial management for the given condition?



- Intravitreal aspiration and antibiotics*
 - Systemic antibiotics
 - Pars plana vitrectomy
 - Revision of cataract surgery
262. An elderly patient presents with complain of epiphora. The clinical picture is given below. What is the diagnosis?



- Blepharophimosis
 - Ankyloblepharon
 - Ectropion*
 - Symblepharon
263. A child with history of lime injury few years back presents to the OPD. The clinical photograph is given below. What is the diagnosis?

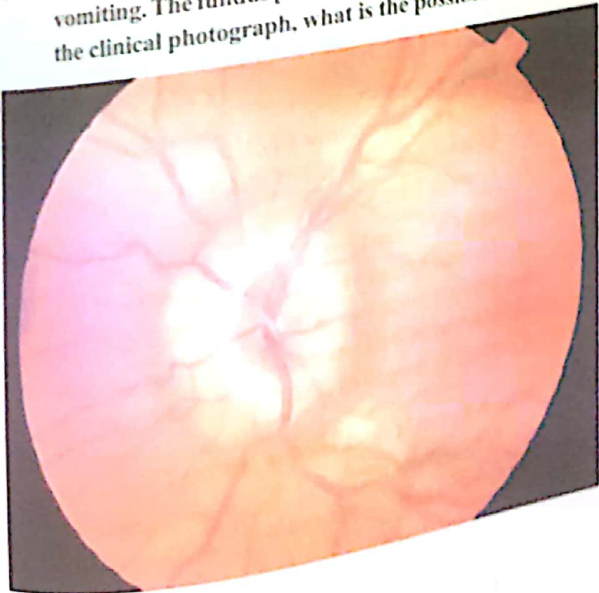


- a. Entropion
- b. Ectropion
- c. Symblepharon
- d. Blepharophimosis

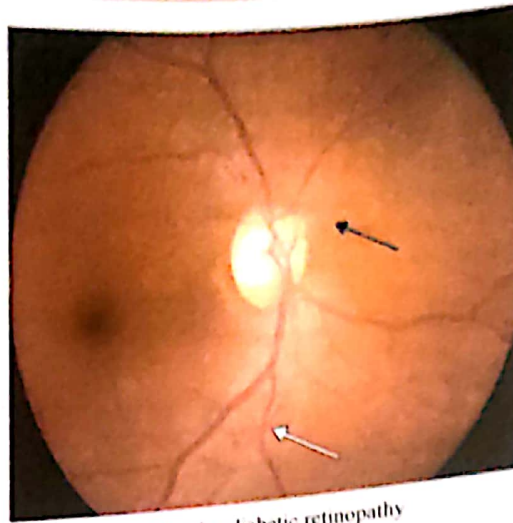
264. From the clinical photograph given, what is the most likely diagnosis?



- a. Cotton wool spots in the retina
 - b. Hard exudates in the retina
 - c. Retina after panretinal photocoagulation (PRP)
 - d. Drusens in retina
265. A patient presents with severe headache associated with vomiting. The fundus picture is similar in both eyes. From the clinical photograph, what is the possible diagnosis?



- a. Optic neuritis
 - b. Optic atrophy
 - c. Papilledema
 - d. CRAO
266. From the clinical photograph given, what is the most likely diagnosis?



- a. Non-proliferative diabetic retinopathy
 - b. Proliferative diabetic retinopathy
 - c. Hypertensive retinopathy
 - d. Central retinal artery occlusion
267. A man gives history of unprotected sexual intercourse with a sex worker 20 years back. He has now increased sexual drive and CNS symptoms. What is true about his pupillary reactions?
- a. Light reflex and accommodation reflex normal
 - b. Light reflex present but no accommodation reflex
 - c. Accommodation reflex present but no light reflex
 - d. Both light reflex and accommodation reflex are absent
268. Most commonly fractured wall in blowout fracture of orbit:
- a. Medial wall
 - b. Lateral wall
 - c. Floor
 - d. Roof

ENT

269. Referred ear pain in acute tonsillitis is due to involvement of which nerve?
- a. Vagus nerve
 - b. Trigeminal nerve
 - c. Glossopharyngeal nerve
 - d. Facial nerve
- 270a. Nasopharyngeal chordoma originates from:
- a. Torus tubaris
 - b. Rathke's pouch
 - c. Notochord
 - d. Proctodeum
- 270b. After chordoma excision, which is best treatment modality?
- a. Radiotherapy
 - b. Chemotherapy
 - c. Combined
 - d. Monoclonal antibody

Questions

271. High tracheostomy is indicated in:
- Stridor due to vocal cord palsy
 - Stridor due to laryngeal carcinoma
 - Stridor due to acute laryngomalacia
 - Stridor due to acute epiglottitis

272. Auditory brain-stem implant is placed in:
- Scala media
 - Scala tympanica
 - Lateral recess
 - Internal acoustic meatus

SKIN

273. What constitutes Malpighian layer?
- Corneum and spinosum
 - Corneum and lucidum
 - Basale and granulosum
 - Spinosum and basale

274. A 7 years old child with history of asthma has developed itching and rashes in axilla, groin and popliteal region. What is the diagnosis?
- Contact dermatitis
 - Atopic dermatitis
 - Xeroderma pigmentosum
 - Seborrheic dermatitis

275. A lady has family history of asthma. She presents with itching in cubital fossa and popliteal fossa. Diagnosis is:
- Contact dermatitis
 - Atopic dermatitis
 - Xeroderma pigmentosum
 - Seborrheic dermatitis

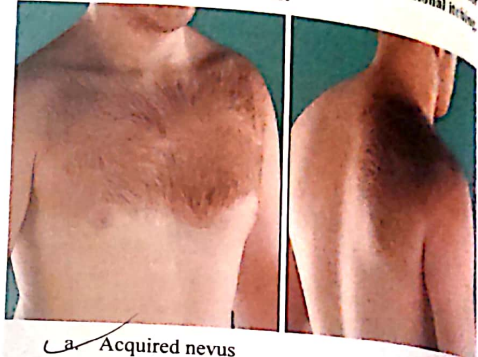
276. Cutis marmorata is due to:
- Bacterial infection
 - Fungal infection
 - Dilatation of vessels in cold
 - Sensitivity of skin to UV rays

277. Following is the image of multiple warty lesions on hand. Virus responsible for producing such lesions is:



- HIV
- HSV
- HPV
- Molluscum

278. A 35 years old male presented with following hyperpigmented lesion with excessive hair on chest for last 15 years. He also complains of occasional itching. Most likely diagnosis is:



- Acquired nevus
- Congenital nevus
- Nevus of Ito
- Mongolian spots

279. Herpes Zoster virus remains latent in:
- Dorsal root ganglion
 - Ventral horn cells
 - Pain receptors in skin
 - Spinal cord

- 280a. Shingles is caused by:
- Herpes simplex virus (HSV)
 - Varicella zoster virus (VZV)
 - Cytomegalovirus (CMV)
 - Epstein-Barr virus (EBV)

- 280b. Shingles is caused by:
- Human herpes virus-1
 - Human herpes virus-2
 - Human herpes virus-3
 - Human herpes virus-4

281. Which nerve is thickened in leprosy?
- Subscapular nerve
 - Greater auricular nerve
 - Occipital nerve
 - Medial popliteal nerve

282. Most common primary cutaneous B-cell lymphoma is
- Hairy cell leukemia
 - Mycosis fungoides
 - Marginal zone lymphoma
 - Burkitt's lymphoma

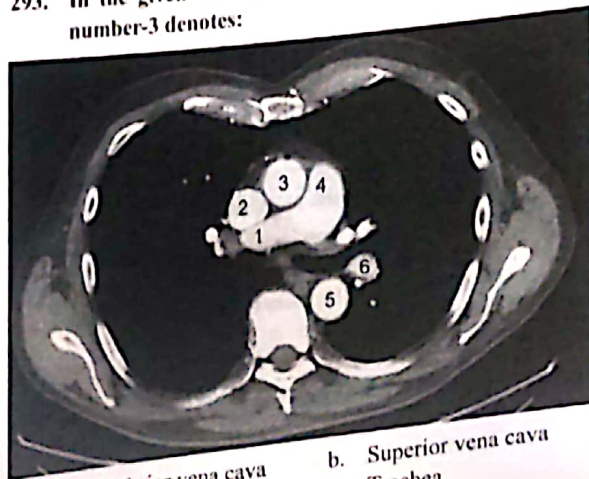
ANAESTHESIA

283. Anesthesia of choice for cesarean section in a female with severe pre-eclampsia:
- Spinal anaesthesia
 - Epidural anaesthesia
 - Spinal plus epidural
 - General anaesthesia
284. A 10 years old child undergoing some ophthalmic surgery has sudden fall in heart rate from 140 beats per minute to 40 beats per minute. As an anesthetist what would be your next step?
- Ask surgeon to stop surgery temporarily
 - Lighten the plane of anaesthesia
 - Immediately give atropine
 - Nothing is require and surgery can be continued
285. Which nerve is used most commonly for monitoring neuromuscular block in anaesthesia?
- Median nerve
 - Ulnar nerve
 - Sciatic nerve
 - Peroneal nerve
286. Mallampati score is used:
- For quantification of risk of anaesthesia
 - To rule out difficult intubation
 - To assess neurological grade before anaesthesia
 - To assess neck movement for intubation
287. Which of the following is the best circuit for spontaneous ventilation?
(NEETPG 2018, AIIMS November 2014)
- Mapleson A
 - Mapleson B
 - Mapleson C
 - Mapleson D
288. Murphy's eye is a feature of:
- Laryngoscope
 - Laryngeal mask airway
 - Tracheostomy tube
 - Endotracheal tube
289. According to ACLS protocol which of the following can be replaced for epinephrine for pulseless arrest?
- Low dose dopamine
 - Vasopressin
 - Dobutamine
 - Magnesium

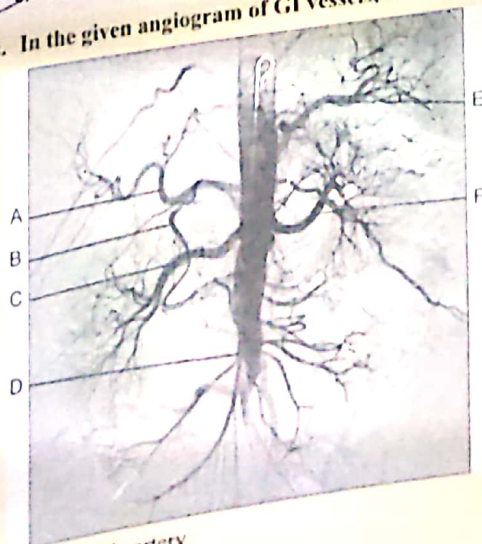
RADIOLOGY

- 290a. Bragg peak phenomenon in radiation therapy is seen in:
- Neutrons
 - Electrons
 - Protons
 - Photons

- 290b. About Bragg peak effect of protons, all of the following are true, except:
- Electromagnetic radiation
 - Produce ionization in biological system
 - The dose of a single beam is two to four times greater than the path dose
 - Beam therapy for AV malformation of the brain
291. Water's view is best for which sinus?
- Frontal sinus
 - Ethmoid sinus
 - Sphenoid sinus
 - Maxillary sinus
292. Which contrast medium can be used in suspected case of esophageal rupture?
- Gadolinium
 - Barium
 - Iohexol
 - Ioxoglate
293. In the given axial reconstruction CT scan of chest, number-3 denotes:



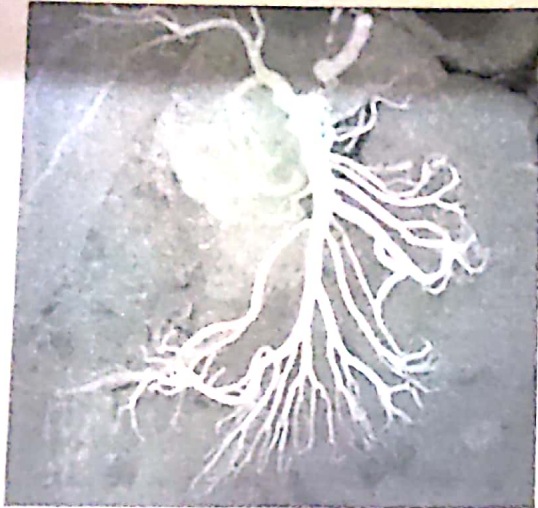
- Inferior vena cava
 - Superior vena cava
 - Aorta
 - Trachea
- 294a. In the given angiogram of GI vessels, D indicates:



- Hepatic artery
- Splenic artery
- Superior mesenteric artery
- Inferior mesenteric artery

Questions

294b. Identify the vessel in the given image of angiogram:



- a. Superior mesenteric artery
- b. Inferior mesenteric artery
- c. Splenic artery
- d. Common hepatic artery

PSYCHIATRY

295. A 40 years old chronic alcoholic has left drinking alcohol for the last 3 days. Now he has irrelevant talk and behaviour with disorientation, restlessness and insomnia. The diagnosis is:
- a. Delirium tremens
 - b. Wernicke's encephalopathy
 - c. Korsakoff's syndrome
 - d. Acute alcoholic intoxication

296. Which of the following is differentiating feature between delirium and dementia?
- a. Vocal impairment in dementia
 - b. Disturbed concentration in dementia
 - c. Loss of immediate memory in delirium
 - d. All of the above
297. Seman's squeeze technique is used for treatment of
- a. Premature ejaculation
 - b. Retrograde ejaculation
 - c. Priapism
 - d. Erectile dysfunction
298. Freud's dream interpretation includes all except:
- a. Displacement
 - b. Condensation
 - c. Compensation
 - d. Revision
- 299a. New name for mental retardation is:
- a. Lunatic
 - b. Minimum brain dysfunction
 - c. Intellectual disability
 - d. Intellectual brain disorder
- 299b. Minimal brain dysfunction is another name for:
- a. Dyslexia
 - b. Autism
 - c. ADHD
 - d. Rett's syndrome
300. Re-experience and acting out repressed affective thoughts is seen in:
- a. Abreaction
 - b. Free association
 - c. Displacement
 - d. Sublimation